



PROJECT MEETING
IN LARISSA

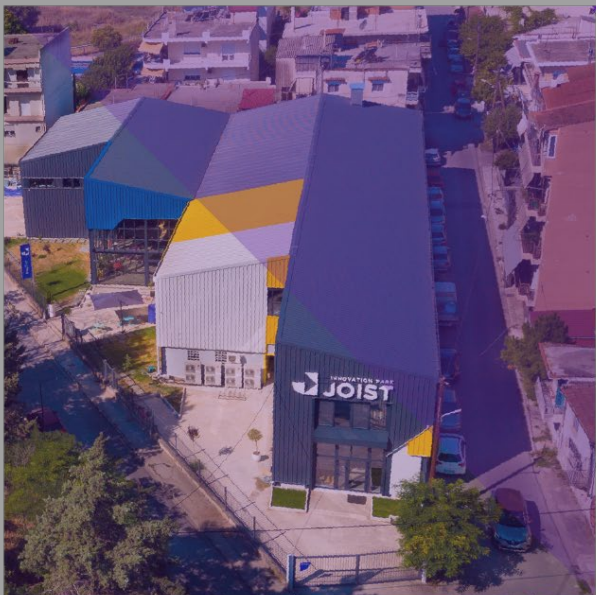


**INFO
PACK**

CONTENTS

MEETING VENUE	2
HOW TO REACH US.....	3
HOW TO GET TO THE CITY OF LARISSA	4
ATHENS TO LARISSA	5
TRAIN	5
BUS	7
THESSALONIKI TO LARISSA.....	10
TRAIN	11
BUS	13
PLACES TO VISIT	15
CURRENCY	19
EMERGENCY NUMBERS	20
CONTACT DETAILS.....	21

MEETING VENUE



The meeting will be held at our premises, located at **JOIST Innovation Park**
(Address: **Valtetsiou & Tripoleos St, Larissa, PC 41336** – [Google Map](#))

HOW TO REACH US

Our offices are located in the city outskirts, ensuring easy access no matter which hotel you are staying in. Here are your options:

BY BUS

- From the central square of Larissa, board bus no. 02. The bus stops are located at the intersection of Kiprou and Megalou Alexandrou streets.
- Disembark at the "LIDL" stop in front of the LIDL store.
- Walk across the parking lot, and you'll see the JOIST building in front of you.



For more information, you can find [here](#) the website for Larissa Public transport.

BY TAXI

- You can find taxi stands in the central square of Larissa and throughout the city. Ask your hotel reception to point you to the nearest one.
- The fare will range between 5€ to 8€, depending on your starting point.

ON FOOT

If you feel like walking, reaching JOIST is straightforward and takes approximately 25 minutes. We highly recommend this option on pleasant weather days!

HOW TO GET TO THE CITY OF LARISSA

You have two primary travel options:

1. Fly to **ATHENS** and then travel to **LARISSA**
2. Fly to **THESSALONIKI** and then travel to **LARISSA**

Traveling via Thessaloniki is generally quicker due to its closer proximity to Larissa compared to Athens, but there are more flight options to the international airport in Athens. Ultimately, your choice will depend on the most convenient flight options available to you, and reaching Larissa from either city is equally easy.



ATHENS TO LARISSA

TRAIN

How to Get from Athens International Airport "Eleftherios Venizelos" to Athens Central Train Station "Larissa Station"

By Metro:

- Board Metro Line 3 (blue line) heading towards "Dimotiko Theatro".
- Transfer at "Syntagma" to Metro Line 2 (red line) (destination "Anthoupoli").
- Disembark at the stop named "Athens / Larissa Station".

By Athens Suburban Railway:

- Board the train heading towards "Piraeus".
- Get off at "Athens", which is the Central Train Station.

These methods are among the quickest and most straightforward to reach the Central Train Station. Refer to the map (image 1) for alternative routes. For more detailed information on transfers between Athens Airport and the city, visit the [Athens Transport website](#).

TRAIN ITINERARIES TO LARISSA

Below is the timetable for daily train services between Athens and Larissa:

- **Approximate Trip Duration:** 3 hours and 30 minutes.

Ticket Pricing:

- **Standard One-Way Ticket:** 39.30€
- **Standard Round-Trip Ticket:** 63.00€

ATHENS TO LARISSA

FROM	TO	DEPARTURE TIME	ARRIVAL TIME
ATHENS	LARISSA	07:58	11:20
ATHENS	LARISSA	10:58	14:20
ATHENS	LARISSA	14:48	18:20
ATHENS	LARISSA	17:58	21:20

LARISSA TO ATHENS

FROM	TO	DEPARTURE TIME	ARRIVAL TIME
LARISSA	ATHENS	08:34	11:58
LARISSA	ATHENS	11:34	14:57
LARISSA	ATHENS	15:24	18:57
LARISSA	ATHENS	18:40	22:04



You can purchase your ticket(s) [here!](#)



Please note that prices and routes change regularly. Always check the official website for the most up-to-date information, especially if you plan to purchase your ticket directly at the station.

BUS

How to Get from Athens International Airport "Eleftherios Venizelos" to the Bus Station

To reach the long-distance (KTEL) bus station at Liosion from Athens International Airport:

- Take city bus no. X93.
- Disembark at "Stathmos KTEL Liosion" (Bus Station Liosion).

City buses can be found at the Departures level of the airport, just outside the terminal entrance. They depart from outside the Arrivals level.

Refer to the map (image 1) for alternative routes. For more detailed information on transfers between Athens Airport and the city, visit the [Athens Transport website](https://www.athens-transport.com/)



BUS ITINERARIES TO LARISSA

Below is the timetable for daily bus services between Athens and Larissa:

- **Approximate Trip Duration:** 4 hours and 30 minutes.

Ticket Pricing:

- **Standard One-Way Ticket:** 30.00€
- **Standard Round-Trip Ticket:** 52.00€

ATHENS TO LARISSA

FROM	TO	DEPARTURE TIME	ITINERARY AVAILABLE
ATHENS	LARISSA	07:30	DAILY
ATHENS	LARISSA	10:00	DAILY
ATHENS	LARISSA	11:00	SATURDAY
ATHENS	LARISSA	13:00	DAILY
ATHENS	LARISSA	15:30	DAILY
ATHENS	LARISSA	17:30	DAILY
ATHENS	LARISSA	19:00	DAILY, EXCEPT SAT
ATHENS	LARISSA	21:00	DAILY

LARISSA TO ATHENS

FROM	TO	DEPARTURE TIME	ITINERARY AVAILABLE
LARISSA	ATHENS	01:00	DAILY
LARISSA	ATHENS	04:00	MON-FRI
LARISSA	ATHENS	07:30	SAT & SUN
LARISSA	ATHENS	10:00	DAILY
LARISSA	ATHENS	12:00	DAILY

LARISSA	ATHENS	15:00	DAILY
LARISSA	ATHENS	17:00	DAILY
LARISSA	ATHENS	18:00	DAILY



Website [here](#). To reserve a ticket, call +30 2410 56 76 00.



Please note that prices and routes change regularly. Always check the official website for the most up-to-date information, especially if you plan to purchase your ticket directly at the station.



THESSALONIKI TO LARISSA

How to Get from Thessaloniki International Airport "Macedonia" to the Train or Bus Station

If you're traveling to Larissa from Thessaloniki, both train and bus options are available.

From Thessaloniki International Airport "Macedonia" to reach the train and bus stations:

- Board city bus no. X1.
- If you're heading to the train station, disembark at Central Train Station ("Neos Sidirodromikos Stathmos", which is three stops before the final stop.
- For the long-distance bus station, continue on to the final stop, i.e., Macedonia Intercity Bus Station ("Stathmos KTEL Makedonia").



More information can be found [here](#).

TRAIN

TRAIN ITINERARIES TO LARISSA

Below is the timetable for daily train services from Thessaloniki to Larissa and vice versa.

- **Approximate Trip Duration:** 2 hours

Ticket Pricing:

- **Standard One-Way Ticket:** from 14.00€ to 20.00€
- **Standard Round-Trip Ticket:** from 22.40€ to 33.00€

LARISSA TO THESSALONIKI

FROM	TO	DEPARTURE TIME	ARRIVAL TIME
LARISSA	THESSALONIKI	05:00	06:43
LARISSA	THESSALONIKI	07:04	08:33
LARISSA	THESSALONIKI	07:30	09:13
LARISSA	THESSALONIKI	10:04	11:33
LARISSA	THESSALONIKI	10:30	12:13
LARISSA	THESSALONIKI	12:25	14:08
LARISSA	THESSALONIKI	14:04	15:33
LARISSA	THESSALONIKI	15:10	16:53
LARISSA	THESSALONIKI	16:45	18:28
LARISSA	THESSALONIKI	17:10	18:39
LARISSA	THESSALONIKI	19:45	21:28
LARISSA	THESSALONIKI	21:50	23:33

THESSALONIKI TO LARISSA

FROM	TO	DEPARTURE TIME	ARRIVAL TIME
THESSALONIKI	LARISSA	05:15	07:00
THESSALONIKI	LARISSA	07:10	08:55
THESSALONIKI	LARISSA	10:00	11:45
THESSALONIKI	LARISSA	11:21	12:51
THESSALONIKI	LARISSA	12:45	14:30
THESSALONIKI	LARISSA	14:21	15:51
THESSALONIKI	LARISSA	14:40	16:25
THESSALONIKI	LARISSA	17:25	19:10
THESSALONIKI	LARISSA	18:21	19:51
THESSALONIKI	LARISSA	19:35	21:20
THESSALONIKI	LARISSA	21:21	22:51
THESSALONIKI	LARISSA	22:00	23:45



You can purchase your ticket(s) [here!](#)



Please note that prices and routes change regularly. Always check the official website for the most up-to-date information, especially if you plan to purchase your ticket directly at the station.

BUS

BUS ITINERARIES TO LARISSA

Below is the timetable for daily bus services from Thessaloniki to Larissa and vice versa.

- **Approximate Trip Duration:** 2 hours

Ticket Pricing:

- **Standard One-Way Ticket:** 14.00€
- **Standard Round-Trip Ticket:** 21.00€

THESSALONIKI TO LARISSA

FROM	TO	DEPARTURE TIME	ITINERARY AVAILABLE
THESSALONIKI	LARISSA	07:30	MON - FRI
THESSALONIKI	LARISSA	09:00	DAILY
THESSALONIKI	LARISSA	11:00	DAILY
THESSALONIKI	LARISSA	13:00	DAILY
THESSALONIKI	LARISSA	14:00	MON - FRI
THESSALONIKI	LARISSA	15:00	DAILY
THESSALONIKI	LARISSA	16:00	DAILY, EXCEPT SAT
THESSALONIKI	LARISSA	17:00	DAILY
THESSALONIKI	LARISSA	18:00	FRI & SUN
THESSALONIKI	LARISSA	19:00	DAILY
THESSALONIKI	LARISSA	20:00	FRI & SUN
THESSALONIKI	LARISSA	21:00	DAILY
THESSALONIKI	LARISSA	22:15	DAILY

LARISSA TO THESSALONIKI

FROM	TO	DEPARTURE TIME	ITINERARY AVAILABLE
LARISSA	THESSALONIKI	05:15	MON - FRI
LARISSA	THESSALONIKI	06:30	MON - FRI
LARISSA	THESSALONIKI	07:00	SAT & SUN
LARISSA	THESSALONIKI	08:30	MON - FRI
LARISSA	THESSALONIKI	09:00	SAT & SUN
LARISSA	THESSALONIKI	09:30	MON - FRI
LARISSA	THESSALONIKI	11:00	DAILY
LARISSA	THESSALONIKI	13:00	DAILY
LARISSA	THESSALONIKI	14:00	DAILY, EXCEPT SAT
LARISSA	THESSALONIKI	15:00	DAILY
LARISSA	THESSALONIKI	16:00	FRI & SUN
LARISSA	THESSALONIKI	17:00	DAILY
LARISSA	THESSALONIKI	18:00	FRI & SUN
LARISSA	THESSALONIKI	19:00	DAILY
LARISSA	THESSALONIKI	20:30	DAILY



Website [here](#). To reserve a ticket, call +30 2410 56 76 00.



Please note that prices and routes change regularly. Always check the official website for the most up-to-date information, especially if you plan to purchase your ticket directly at the station.

PLACES TO VISIT



THESSALY REGION AND THE CITY OF LARISSA

In the region of Thessaly, a capital city lies surrounded by lush valleys, and some of the most imposing mountains in Greece. Larissa, with a population of approximately 148,000 residents, is a city where ancient history and long tradition in agriculture meet the modern way of living.

You can find more information about the place as well as some trips or activities to plan, here:



<https://www.visitgreece.gr/mainland/thessaly/>

ANCIENT THEATRE OF LARISSA

A highly notable and large theatre on Greek ground, the First Ancient Theatre of Larissa was built on the slope of Frourio hill (or 'Fortress' hill), at the fortified citadel of the ancient city. Apparently, it was fitted into the city web of ancient Larissa, as its parodoi (passageways, public entrances) were linked to the city's large processional ways. According to inscription testimonies, the construction dates to the early third century BC. During the first centuries, the theatre served a dual purpose: apart from theatrical performances, it also hosted the assemblies of the senior regional authority, the so called "Koinon" of the Thessalians. At the end of the first century BC, it was transformed into a roman arena and thus stayed in use until the late third century AD, whereas theatrical performances and other events took place in the town's ornate Second Ancient Theatre.



<https://www.larissa-theatre.com/en/>



G.I. KATSIGRAS MUSEUM – MUNICIPAL ART GALLERY OF LARISSA

The Municipal Art Gallery of Larissa - G.I. Katsigras Museum is a cornerstone of cultural life in Larissa, Greece, celebrated for its extensive collection of modern Greek art. The museum was founded through the generous donation of Dr. Georgios Katsigras, a distinguished surgeon and passionate art collector, who contributed over 700 artworks by prominent Greek artists from the 19th and 20th centuries.

The collection includes paintings, sculptures, and prints, representing the evolution of modern Greek art and its various movements. Beyond its permanent collection, the museum hosts a dynamic range of temporary exhibitions, educational programs, workshops, and cultural events, engaging the local community and visitors alike. Its modern facilities include well-equipped exhibition spaces, a library, and areas for art conservation.

By fostering an appreciation for Greek artistic heritage and contemporary creativity, the Municipal Art Gallery of Larissa - G.I. Katsigras Museum plays a vital role in the region's cultural and educational landscape, attracting art enthusiasts, scholars, and tourists from around the world.



<https://www.katsigrasmuseum.gr/homepage/>



DIACHRONIC MUSEUM OF LARISSA

The Diachronic Museum of Larissa is situated on the pine-covered hill of Mezourlo, at the southern outskirts of Larissa. The museum's design is harmoniously integrated into its natural surroundings, ensuring that its large size does not disrupt the forest's aesthetics. The museum comprises three main buildings, featuring open spaces, gardens, and public fountains between them. These buildings span two to four levels, with a total area of 11,750 square meters. The first building houses the reception area with a ticket desk and vestibule, a 100-seat amphitheater, rooms for educational programs, a gift shop, a café, and restrooms.

The second building accommodates the offices of the Antiquities Ephorate of Larissa and its library, which operates independently from the museum with a separate entrance and different working hours. The third and largest building includes halls for permanent and periodic exhibitions, occupying areas of 1,500 square meters and 500 square meters, respectively. This building also contains five contemporary conservation laboratories for paintings and murals, stone and marble, ceramics and glass, metal, and mosaics, as well as storage rooms for antiquities. Special provisions ensure that people with disabilities can move freely throughout the entire museum. Additionally, there is ample parking space for cars and buses in the surrounding area.



<http://dml.culture.gr/index.php/en/>



CURRENCY

The official currency of Greece is the Euro. Other currencies are not accepted, so it's advisable to exchange any foreign currency, such as dollars, at a bank. Exchange rates are consistent across the country.

Please note that currency exchange shops, especially those in popular tourist areas, may charge significant commissions. Always inquire about these fees before proceeding with any transaction.

Banking hours in Greece are typically from 8:00 AM to 2:00 PM, Monday through Friday.



EMERGENCY NUMBERS



AMBULANCE: 166

FIRE DEPARTMENT: 199

POLICE: 100

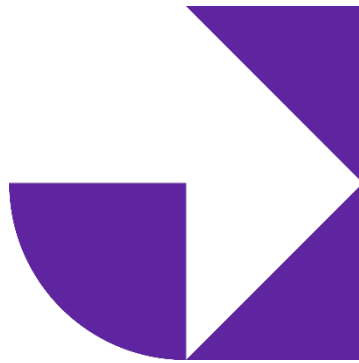
TOURIST POLICE: 171

PHARMACIES: 107

HOSPITALS: 106

EUROPEAN EMERGENCY NUMBER: 112

**NATIONAL PUBLIC HEALTH ORGANIZATION
(EODY): 1135**



CONTACT DETAILS

JOIST Innovation Park

Valtetsiou & Tripoleos Street, 41336, Larissa, Greece

Phone Number: **+30 2410 234422**

Email: [**info@joistpark.eu**](mailto:info@joistpark.eu)



[**www.joistpark.eu**](http://www.joistpark.eu)